

## Diabetes: A1C Poor Control

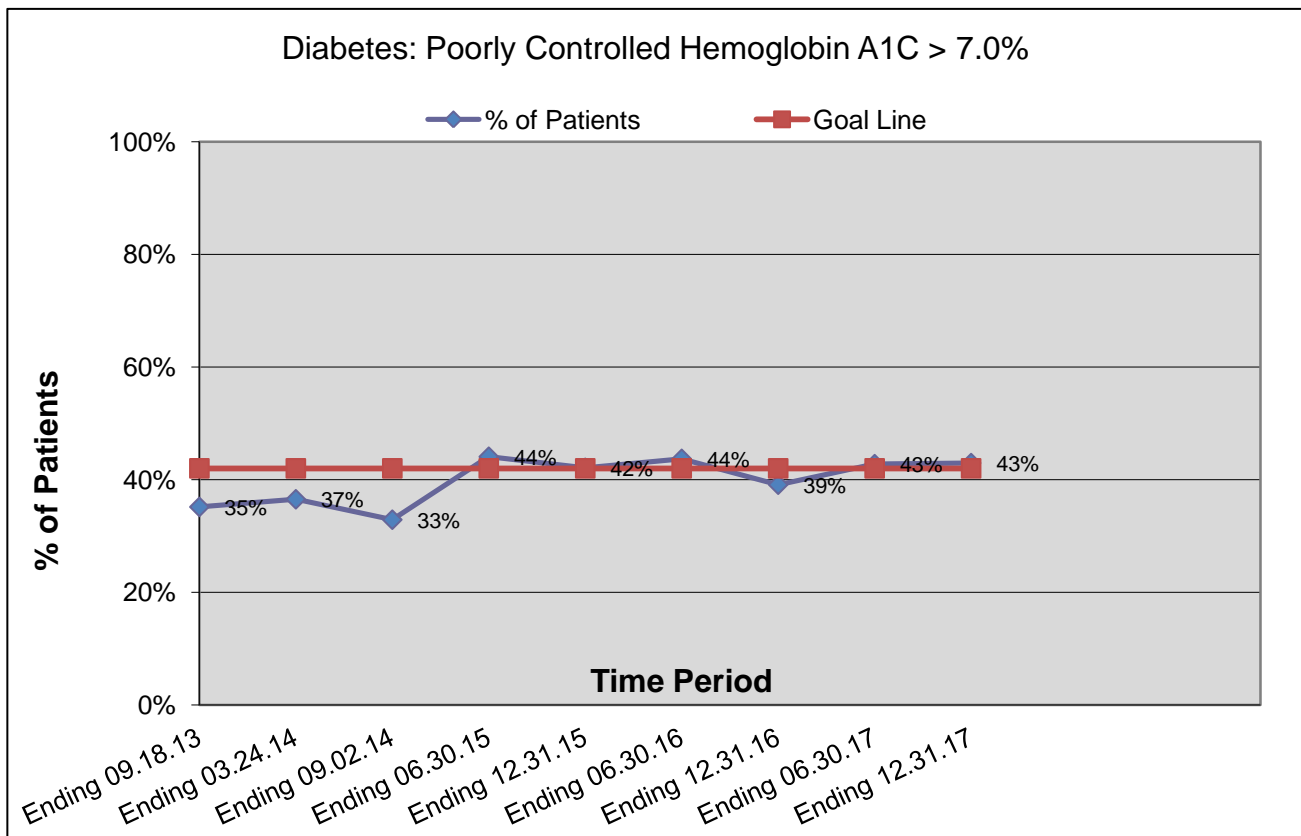
### Diabetes: Poorly Controlled Hemoglobin A1C > 7.0%

**Denominator:** Patients with diabetes with encounter during past 3 years.

**Numerator:** MOST RECENT Hemoglobin A1C > 7.0% during past 12 months.

Time Period	Denominator:	Numerator:	Quality Measure:	Goal:
			% of Patients	Goal Line
Ending 09.18.13	441	155	35%	42%
Ending 03.24.14	441	161	37%	42%
Ending 09.02.14	441	145	33%	42%
Ending 06.30.15	404	178	44%	42%
Ending 12.31.15	392	165	42%	42%
Ending 06.30.16	380	166	44%	42%
Ending 12.31.16	376	147	39%	42%
Ending 06.30.17	379	162	43%	42%
Ending 12.31.17	375	161	43%	42%

**Description:** Percentage of patients with diabetes who had (poorly controlled) hemoglobin A1C > 7.0% during the measurement period. (Lower % = Better Quality)



### Data Stratified for Population Aged 65+

Denominator:	Numerator:	Quality Measure:
		% of Patients
179	64	36%
179	56	31%
180	69	38%